



Portfolio of Professional Work

Ryan Croyle
2015-2019

Built and Under Construction



The Ashby at South Hills Village Station

An upscale “urban” multi-family complex in heart of the suburbs designed to appeal to a wide demographic and provide excellent access to public transit.



Project Information

Location: Bethel Park, PA

Project Type: Multi-Family Residential

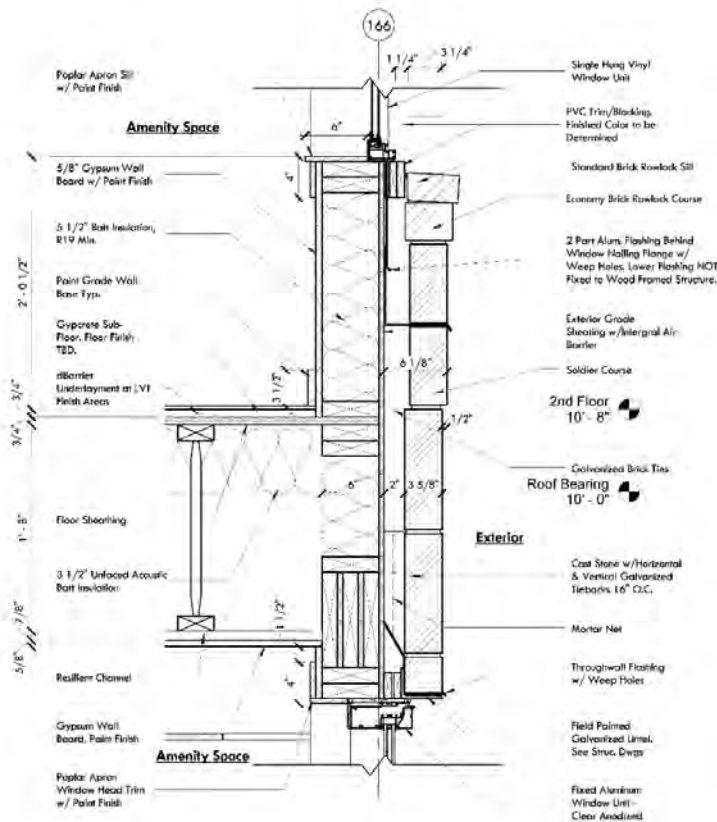
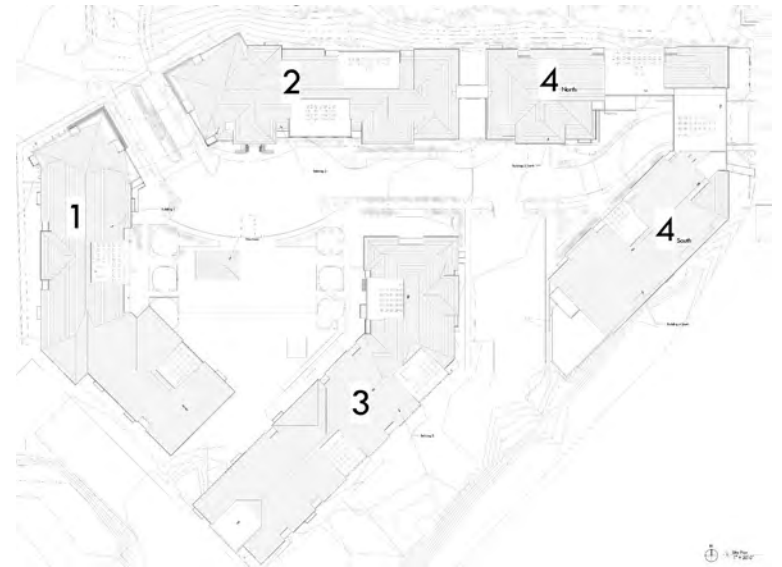
Project Size: 330,000 sf, 300 Units

Project Cost: \$40 million

Status: Complete, 2018

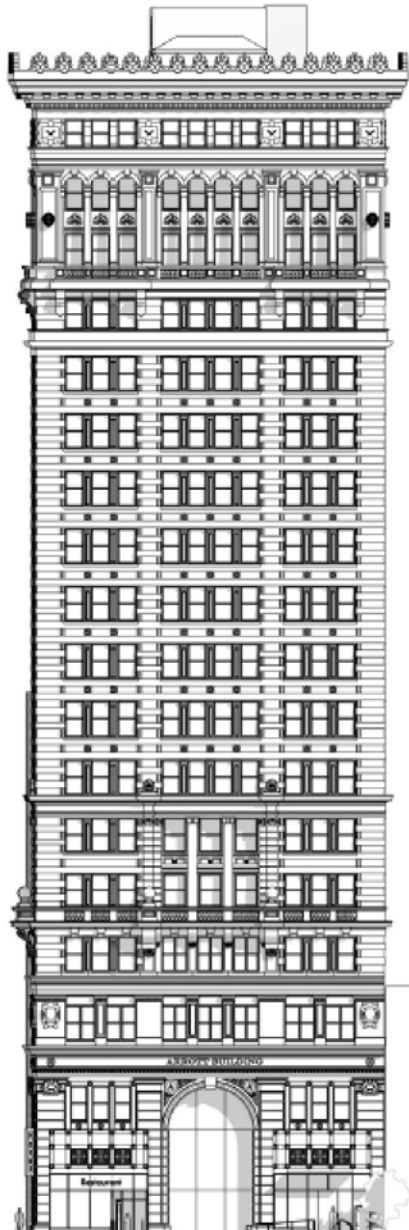
Role: Assistant Project Designer

Responsibilities: Development of project from schematic design through construction documents, and full construction administration. Produced majority of design documentation as part of three person design team and was responsible for RFIs, submittals, and site observations.



Arrott Building Hotel

An adaptive reuse of Frederick Osterling's 1902 tower to convert into a boutique lifestyle hotel.



Project Information

Location: Pittsburgh, PA

Project Type: Hotel/Hospitality

Project Size: 92,000 sf, 20 stories, 124 keys

Project Cost: \$30 million

Status: Under Construction (Completion July 2020)

Role: Project Architect

Responsibilities: Development of project from schematic design through construction documents, and full construction administration. Worked with Historic Consultant to secure Historic Tax Credit funding essential to project success. Produced majority of design documentation as part of three person design team and was responsible for RFIs, submittals, and site observations. Worked with General Contractor to overcome numerous conditions encountered throughout the construction process.



Tryp Hotel

Creating a destination boutique hotel from an abandoned historic building along one of the most rapidly growing neighborhoods in Pittsburgh.



Project Information

Location: Lawrenceville, Pittsburgh, PA

Project Type: Hotel/Hospitality

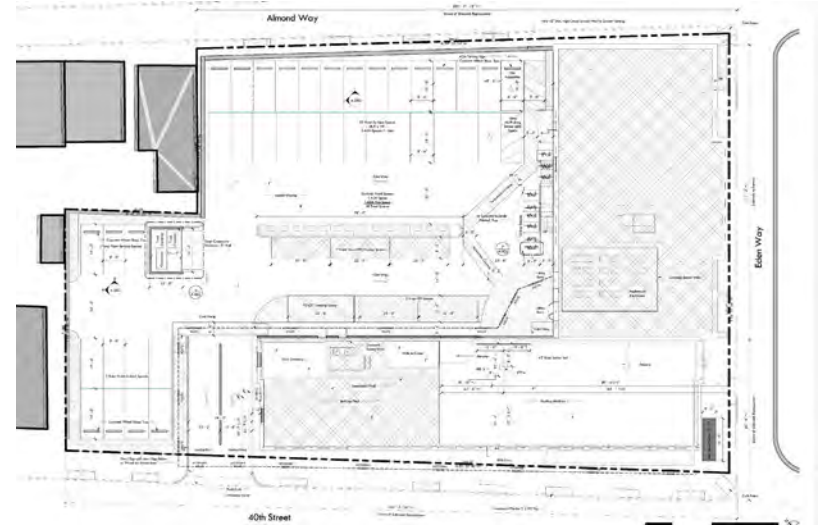
Project Size: 65,000 sf, 5 Stories, 108 keys

Project Cost: \$25 million

Status: Complete, 2019

Role: Assistant Project Designer

Responsibilities: Designed and detailed majority of all exterior components of the building including infill wall, new rooftop restaurant/deck, and canopies. Developed construction documents as part of a four person team and assisted managing the construction administration process.



Sts. John and Paul Church Pavilion & Chapel

An outdoor event space for one of the fastest growing Parishes in the Diocese.



Project Information - Pavilion

Location: Wexford, PA

Project Type: Religious

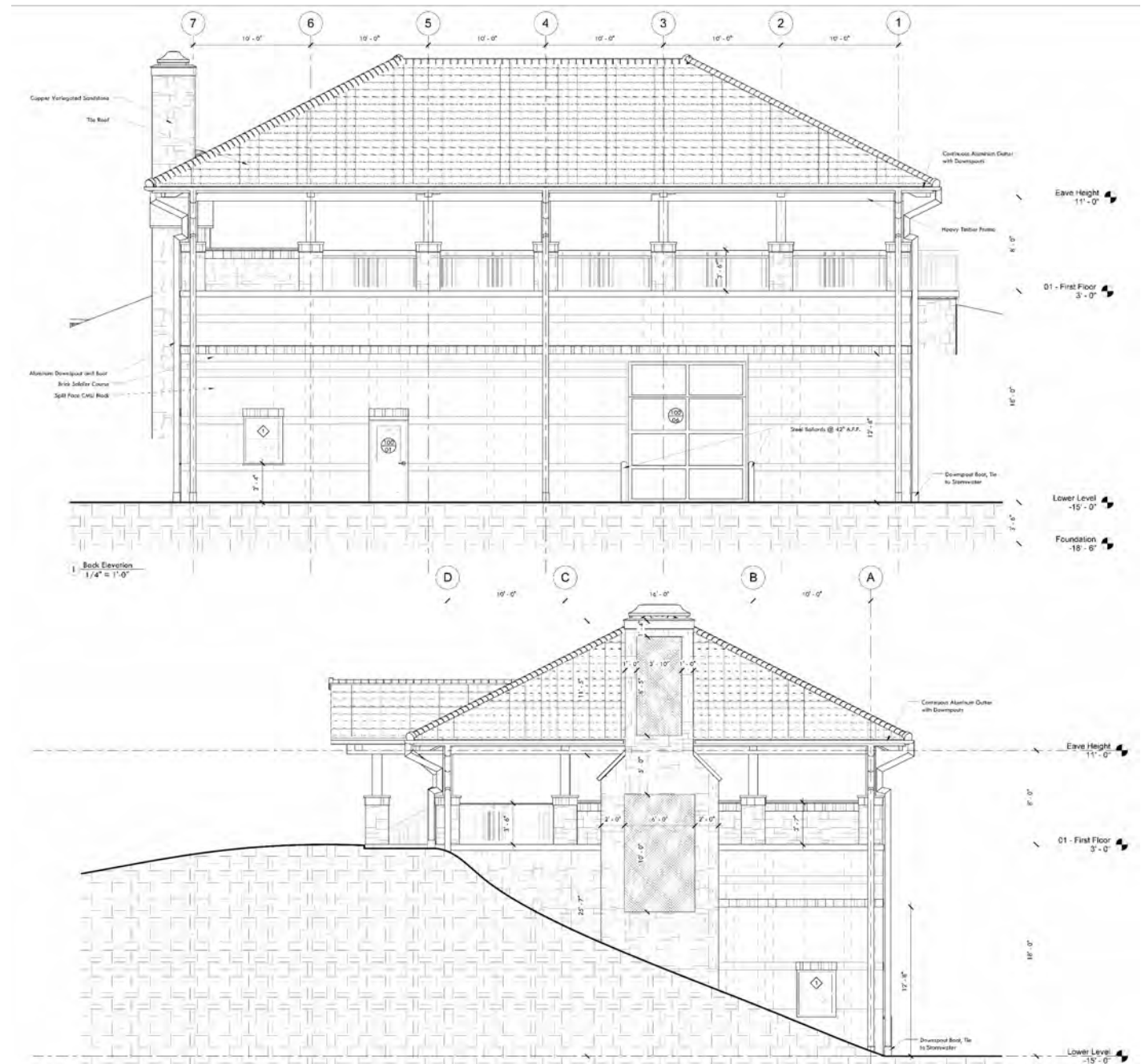
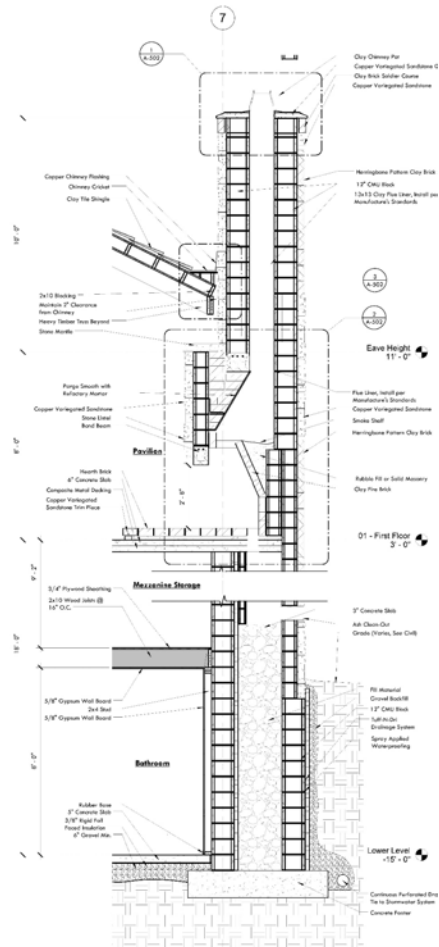
Project Size: 4,850 sf, 2 Stories

Project Cost: \$2 million

Status: Pavilion: Complete, 2017

Role: Assistant Project Designer

Responsibilities: Conceptual Design through Construction Documents. Coordinated heavy timber manufacturer and secured several variances to allow the project to meet the needs of the parish.



Project Information - Chapel

Location: Wexford, PA

Project Type: Religious

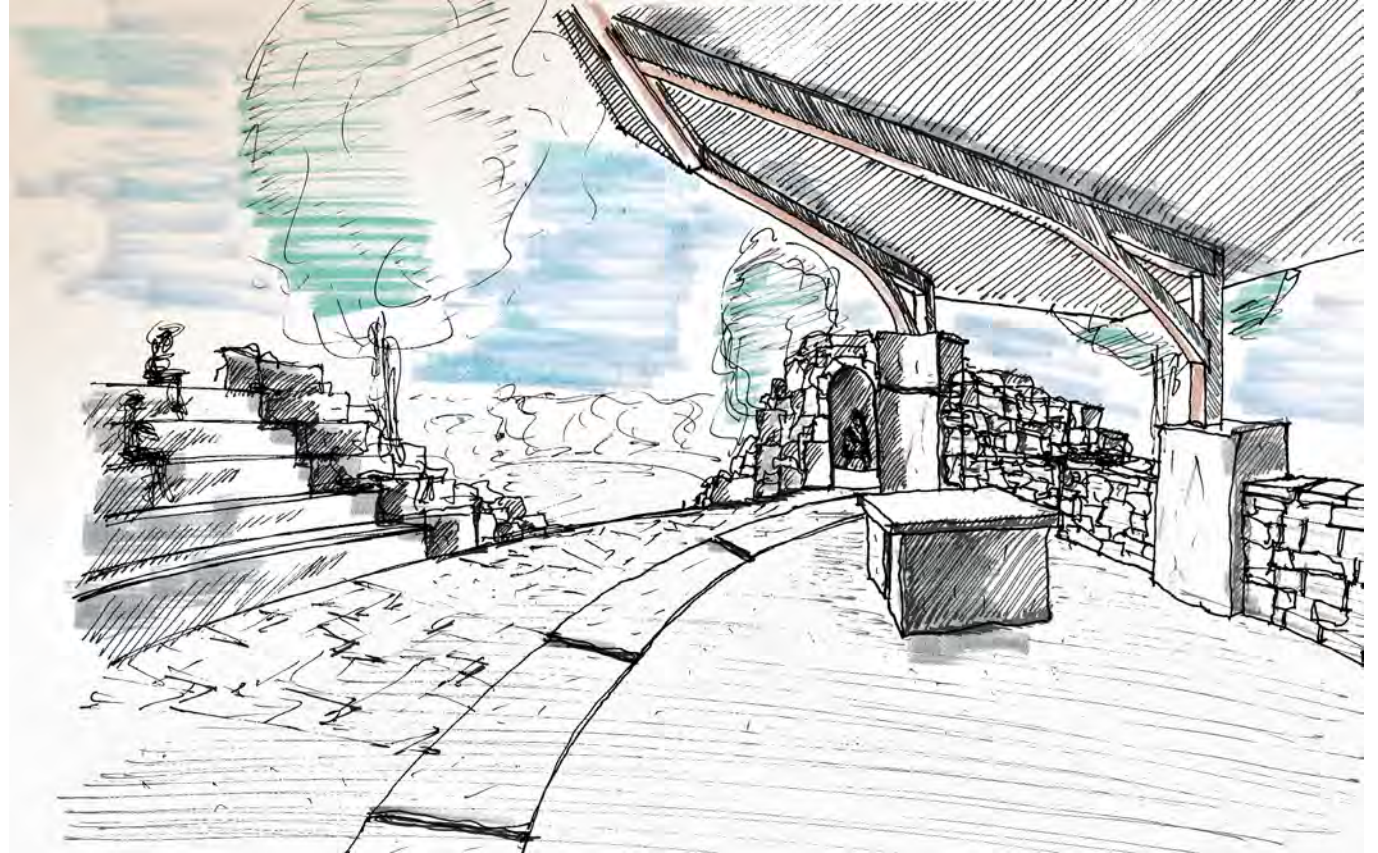
Project Size: NA (Outdoor Space)

Project Cost: Unknown

Status: In Design

Role: Assistant Project Designer

Responsibilities: Development of conceptual design and studies for Diocese review and approval.



Oakmont Bakery

A new home for one of the most beloved bakeries in the Pittsburgh Area.



Project Information

Location: Oakmont, PA

Project Type: Retail

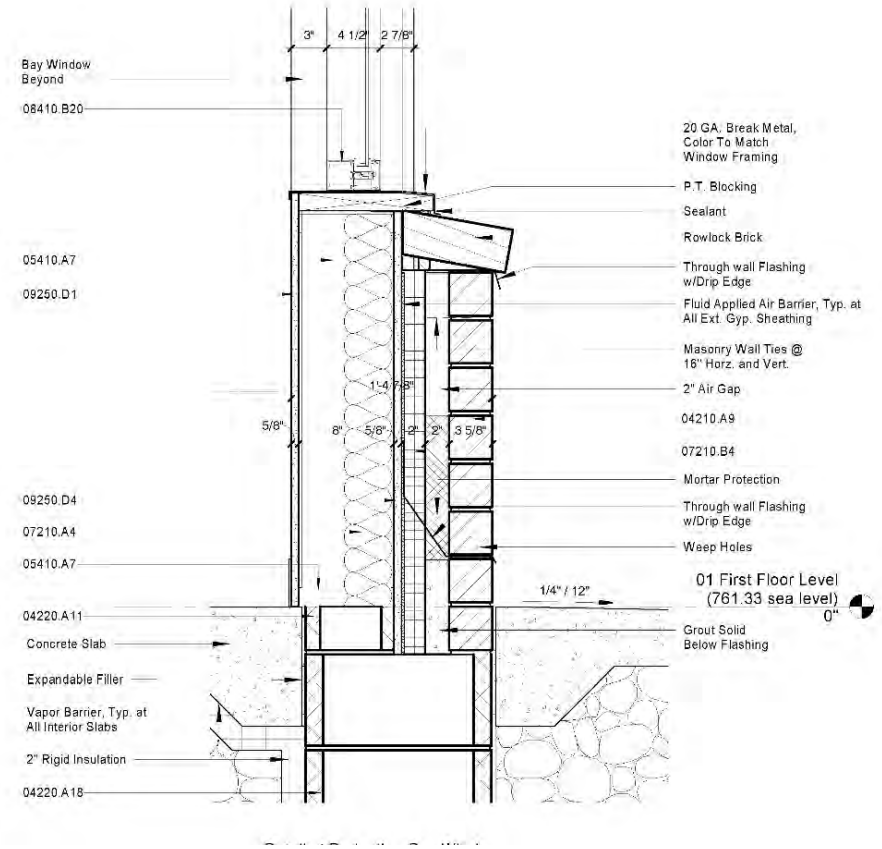
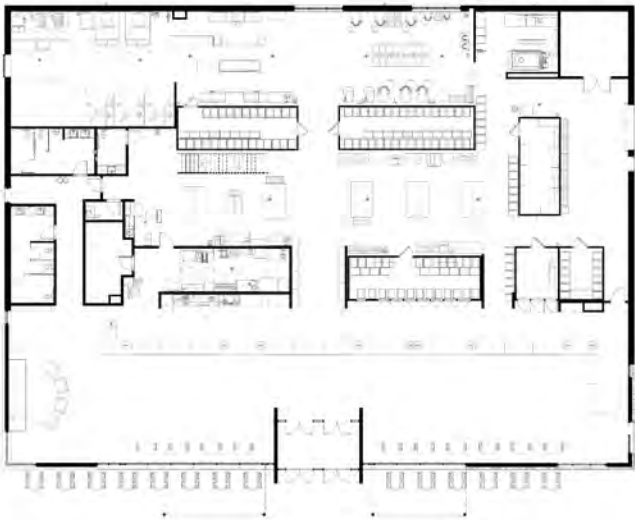
Project Size: 17,800 sf, 2 stories

Project Cost: Unknown

Status: Complete, 2019

Role: Assistant Project Designer

Responsibilities: Assisted in a fast track completion of the construction documents after an aggressive value engineering process.



Conceptual and Unbuilt



Offices @ Baum Expansion

Schematic design of infill addition and renovation to an existing art deco building that was formerly an auto dealership.

Location: Pittsburgh, PA

Status: In Design

Role: Assistant Project Designer

Responsibilities: Development of conceptual design renderings for Planning Commission approval.



View Key

Offices @ Baum Parking and Office

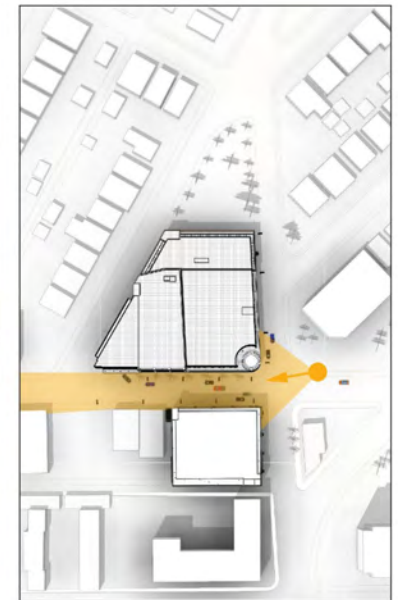
Schematic design of new parking structure with two stories of offices.

Location: Pittsburgh, PA

Status: Not Completed

Role: Assistant Project Designer

Responsibilities: Development of conceptual design renderings for Planning Commission approval.



View Key

Greensburg Dispensary

Medical Marijuana Dispensary as part of Phase I DOH rollout.

Location: Greensburg, PA

Status: Not Completed

Role: Project Architect

Responsibilities: Development of project from schematic design through construction documents. Worked with multiple contractors and municipal approval groups to secure approval of project.



McConway & Torley Façade Renovations

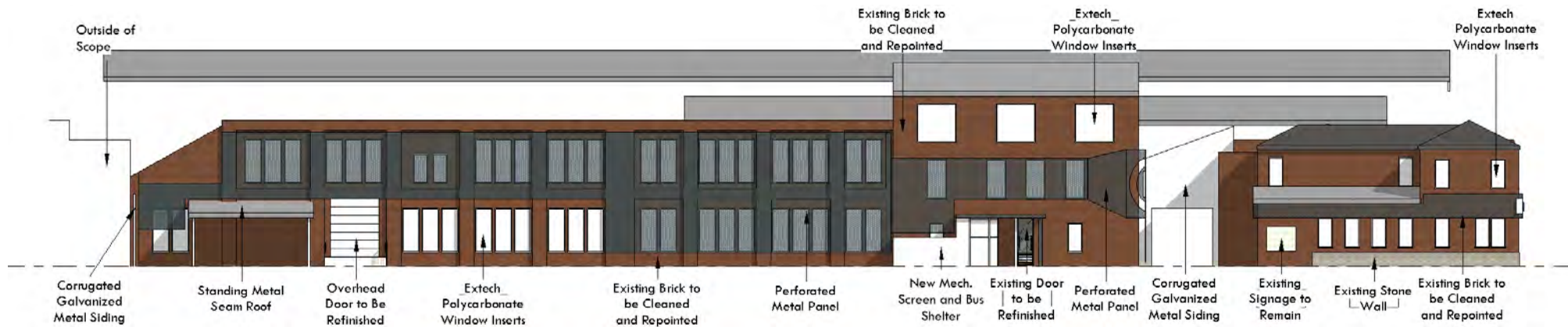
Schematic design of low cost façade updates to one of the last working foundries within city limits.

Location: Pittsburgh, PA

Status: Not Completed

Role: Project Architect

Responsibilities: Development of conceptual design renderings for McConway & Torley Executive Board review.



One Grandview

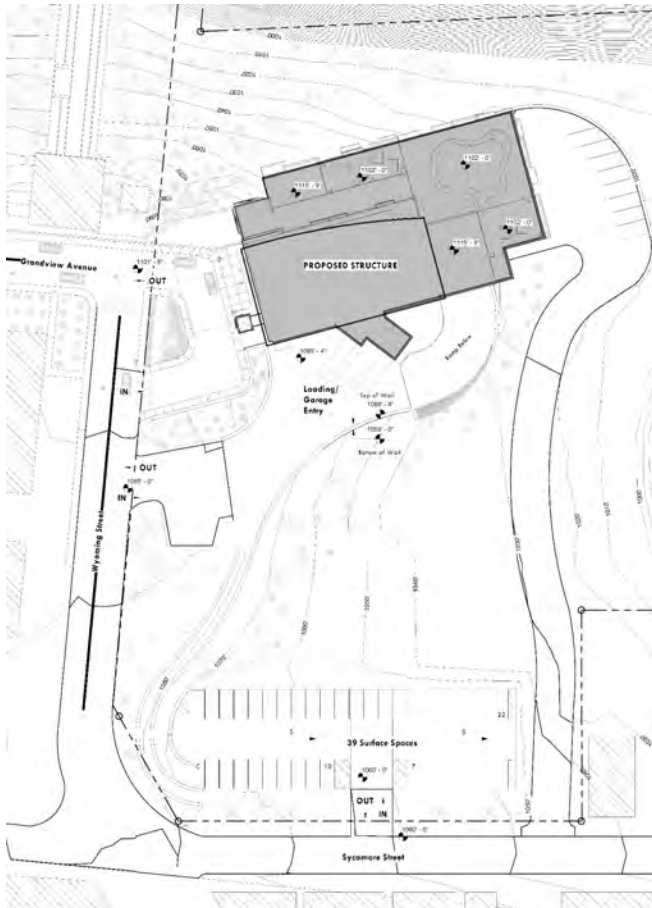
One phase of a 15 year long effort to bring a grand edifice to the edge of Mt. Washington. This iteration represents the third and current incarnation of this project that I have been involved with over the past four years.

Location: Pittsburgh, PA

Status: In Design

Role: Project Architect

Responsibilities: Manage design team in developing design that meets the client's rapidly changing ideals while satisfying the economic constraints from the separate development team.



South Beatty Development

Pittsburgh Urban Redevelopment Authority RFP response for a mixed income housing project with goal of increasing parking and equity within East Liberty's increasingly gentrified community.

Location: Pittsburgh, PA

Status: Not Completed

Role: Project Architect

Responsibilities: Led the development team in the planning and creation of concept, pro forma, p4 criteria, and design of the development.

